



29 Close De La Fontaine
, Le Mont Fallu, JE3 7GZ

£449,000



29 Close De La Fontaine

, Le Mont Fallu, JE3 7GZ

Nestled in the charming development Clos de la Fontaine, St Peter, this lovely two-bedroom cottage offers a delightful blend of modern living and traditional character. Upon entering, you are welcomed into a spacious open-plan lounge and kitchen, perfect for both relaxation and entertaining. The design flows seamlessly into the conservatory.

The property features two bedrooms, ideal for a starter family home or as a guest bedroom. The bathroom is thoughtfully designed, ensuring comfort and convenience. Outside, you will find a private rear patio, accessible from the conservatory, which serves as an excellent spot for al fresco dining or simply unwinding in the sun.

Parking is a notable advantage of this property, with a private space for one car and you can purchase an additional under cover parking space and a large private store cupboard if required.

Hallway
7'11 x 6'0 (2.41m x 1.83m)

Bathroom

kitchen
19'9 x 8'5 (6.02m x 2.57m)

lounge/ Conservatory
13'11 x 12'9 (4.24m x 3.89m)

First floor landing
4'9 x 3'0 (1.45m x 0.91m)

Bedroom 1
14'2 x 12'9 (4.32m x 3.89m)





Bedroom 2
10'4 x 9'2 (3.15m x 2.79m)

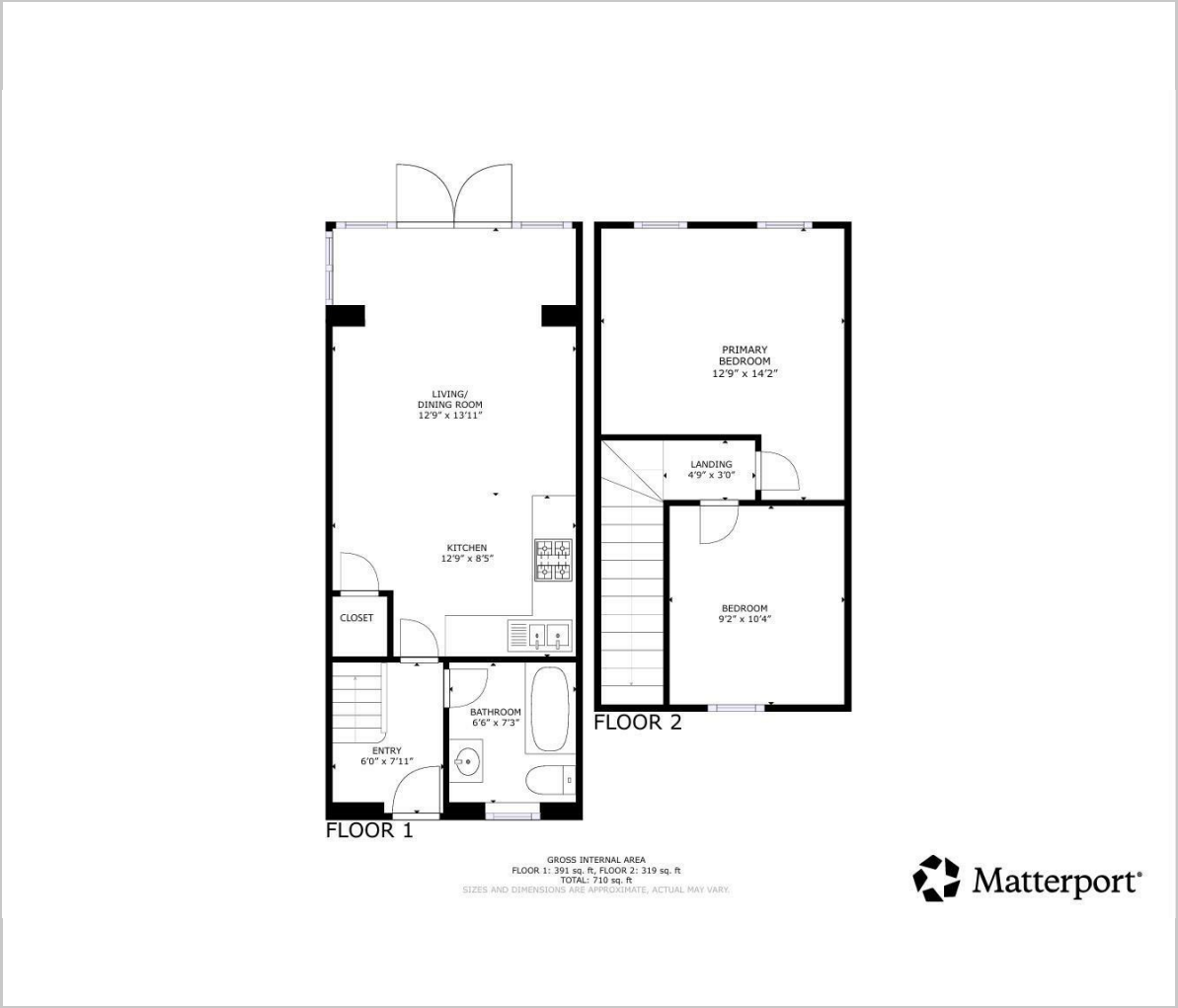
Rear patio

Parking

Services



Floor Plan



Viewing

Please contact our Troys Estate Agency Ltd Office on 01534 607070 if you wish to arrange a viewing appointment for this property or require further information.

These particulars, whilst believed to be accurate are set out as a general outline only for guidance and do not constitute any part of an offer or contract. Intending purchasers should not rely on them as statements of representation of fact, but must satisfy themselves by inspection or otherwise as to their accuracy. No person in this firms employment has the authority to make or give any representation or warranty in respect of the property.

10 Sand Street, St Helier, Jersey, JE2 3QF
Tel: 01534 607070 Email: duty@troysjsy.com

Area Map



Energy Efficiency Graph

